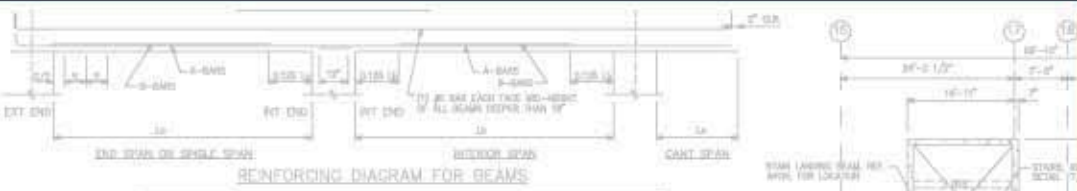




Springhill College Dormitory Viragh I



BEAM SCHEDULE									
NO.	SPAN	TYPE	SECTION	REINFORCING	REMARKS	STIRRUPS	TYPE	SPACING	REMARKS
1	12'-0"	1	12" x 18"	3#4 @ 12" o.c.		3#4 @ 12" o.c.	1	12" o.c.	
2	12'-0"	1	12" x 18"	3#4 @ 12" o.c.		3#4 @ 12" o.c.	1	12" o.c.	
3	12'-0"	1	12" x 18"	3#4 @ 12" o.c.		3#4 @ 12" o.c.	1	12" o.c.	
4	12'-0"	1	12" x 18"	3#4 @ 12" o.c.		3#4 @ 12" o.c.	1	12" o.c.	
5	12'-0"	1	12" x 18"	3#4 @ 12" o.c.		3#4 @ 12" o.c.	1	12" o.c.	
6	12'-0"	1	12" x 18"	3#4 @ 12" o.c.		3#4 @ 12" o.c.	1	12" o.c.	
7	12'-0"	1	12" x 18"	3#4 @ 12" o.c.		3#4 @ 12" o.c.	1	12" o.c.	
8	12'-0"	1	12" x 18"	3#4 @ 12" o.c.		3#4 @ 12" o.c.	1	12" o.c.	
9	12'-0"	1	12" x 18"	3#4 @ 12" o.c.		3#4 @ 12" o.c.	1	12" o.c.	
10	12'-0"	1	12" x 18"	3#4 @ 12" o.c.		3#4 @ 12" o.c.	1	12" o.c.	
11	12'-0"	1	12" x 18"	3#4 @ 12" o.c.		3#4 @ 12" o.c.	1	12" o.c.	
12	12'-0"	1	12" x 18"	3#4 @ 12" o.c.		3#4 @ 12" o.c.	1	12" o.c.	
13	12'-0"	1	12" x 18"	3#4 @ 12" o.c.		3#4 @ 12" o.c.	1	12" o.c.	
14	12'-0"	1	12" x 18"	3#4 @ 12" o.c.		3#4 @ 12" o.c.	1	12" o.c.	
15	12'-0"	1	12" x 18"	3#4 @ 12" o.c.		3#4 @ 12" o.c.	1	12" o.c.	
16	12'-0"	1	12" x 18"	3#4 @ 12" o.c.		3#4 @ 12" o.c.	1	12" o.c.	
17	12'-0"	1	12" x 18"	3#4 @ 12" o.c.		3#4 @ 12" o.c.	1	12" o.c.	
18	12'-0"	1	12" x 18"	3#4 @ 12" o.c.		3#4 @ 12" o.c.	1	12" o.c.	
19	12'-0"	1	12" x 18"	3#4 @ 12" o.c.		3#4 @ 12" o.c.	1	12" o.c.	
20	12'-0"	1	12" x 18"	3#4 @ 12" o.c.		3#4 @ 12" o.c.	1	12" o.c.	
21	12'-0"	1	12" x 18"	3#4 @ 12" o.c.		3#4 @ 12" o.c.	1	12" o.c.	
22	12'-0"	1	12" x 18"	3#4 @ 12" o.c.		3#4 @ 12" o.c.	1	12" o.c.	
23	12'-0"	1	12" x 18"	3#4 @ 12" o.c.		3#4 @ 12" o.c.	1	12" o.c.	
24	12'-0"	1	12" x 18"	3#4 @ 12" o.c.		3#4 @ 12" o.c.	1	12" o.c.	
25	12'-0"	1	12" x 18"	3#4 @ 12" o.c.		3#4 @ 12" o.c.	1	12" o.c.	
26	12'-0"	1	12" x 18"	3#4 @ 12" o.c.		3#4 @ 12" o.c.	1	12" o.c.	
27	12'-0"	1	12" x 18"	3#4 @ 12" o.c.		3#4 @ 12" o.c.	1	12" o.c.	
28	12'-0"	1	12" x 18"	3#4 @ 12" o.c.		3#4 @ 12" o.c.	1	12" o.c.	
29	12'-0"	1	12" x 18"	3#4 @ 12" o.c.		3#4 @ 12" o.c.	1	12" o.c.	
30	12'-0"	1	12" x 18"	3#4 @ 12" o.c.		3#4 @ 12" o.c.	1	12" o.c.	

Architect – Goodwin Mills & Cawood, Inc.

Building Size – 66,000 square feet

Structural System:

Superstructure – Cast in place concrete skip joists integrate with a lateral load resisting system consisting of cast in place concrete stairwells and elevator cores.

Substructure – The building is constructed with a partial basement built with concrete walls. The entire structure is supported on shallow foundations.



BARTER & ASSOCIATES, INC. Structural Engineers

• DESIGN • ANALYSIS • INVESTIGATION • COMMERCIAL • INDUSTRIAL • MARINE

